



**Features**

- ASME B16.5 flanged inlet connections 1/2" to 2" sizes.
- Standard 1/2" NPT female outlet.
- Bleed port 1/2" NPT female with Hex Plug is standard.
- OS&Y with graphite packing is standard, optional PTFE.
- Needle valve with PTFE packing is standard, optional Graphite.
- Optional fire safe design to BS6755 Part 2.
- Optional NACE certification.

**Applications**

- Pressure or level measurement.
- Isolation service.
- Sampling.

**Standard Pressure Test**

- to BS6755 Part 1.

**Ordering Information**

**VMS Series** (Single Block)

Flange to 1/2" NPTF

**Isolate:** OS&Y or Needle

Designators	Isolate	Intermediate Ordering #
<b>Y</b>	OS&Y	VMS-Y
<b>N</b>	Globe Needle	VMS-N

**VMB Series** (Single Block & Bleed)

Flange to 1/2" NPTF

**Isolate:** OS&Y or Needle

**Bleed:** OS&Y or Needle

Designators	Isolate	Bleed	Intermediate Ordering #
<b>Y</b>	OS&Y	OS&Y	VMB-Y
<b>N</b>	Globe Needle	Globe Needle	VMB-N
<b>D</b>	OS&Y	Globe Needle	VMB-D

**VMD Series** (Double Block & Bleed)

Flange to 1/2" NPTF

**Primary Isolate:** OS&Y or Needle

**Secondary Isolate:** OS&Y or Needle

**Bleed:** OS&Y or Needle

Designators	Primary Isolate	Secondary Isolate	Bleed	Intermediate Ordering #
<b>Y</b>	OS&Y	OS&Y	OS&Y	VMD-Y
<b>N</b>	Globe Needle	Globe Needle	Globe Needle	VMD-N
<b>D</b>	OS&Y	OS&Y	Globe Needle	VMD-D

**Process Connections**

Flange Size	
Designator	Size
8	1/2" (DN15)
12	3/4" (DN20)
16	1" (DN25)
24	1 1/2" (DN40)
32	2" (DN50)
48	3" (DN80)

Flange Class	
Designator	Class Rating
A	150
B	300
C	600
D	900/1500
E	2500

Finish Standard	
Designator	Finish
1	Raised Faced Smooth
2	Raised Faced Serrated
3	Raised Faced Stock

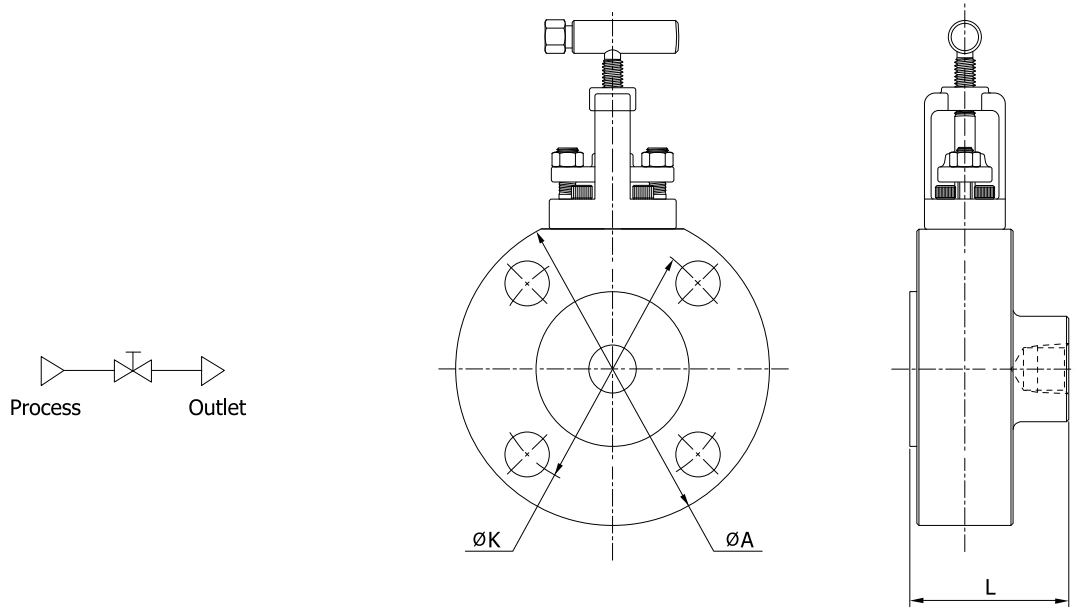
**Packing Material**

OS&Y Packing	Needle Valve Packing
<b>Nil:</b> Standard Graphite <b>PE:</b> PTFE	<b>Nil:</b> Standard PTFE <b>GF:</b> Graphite <b>RP:</b> Reinforced PTFE

**Option, Trim and Body Material**

Option	Trim Material	Body Material
<b>SG:</b> NACE MR0175 <b>FS:</b> Fire tested design	<b>S:</b> SS316 <b>C:</b> Carbon Steel <b>D:</b> Duplex <b>M:</b> Monel	<b>S:</b> SS316 <b>C:</b> Carbon Steel <b>D:</b> Duplex <b>M:</b> Monel

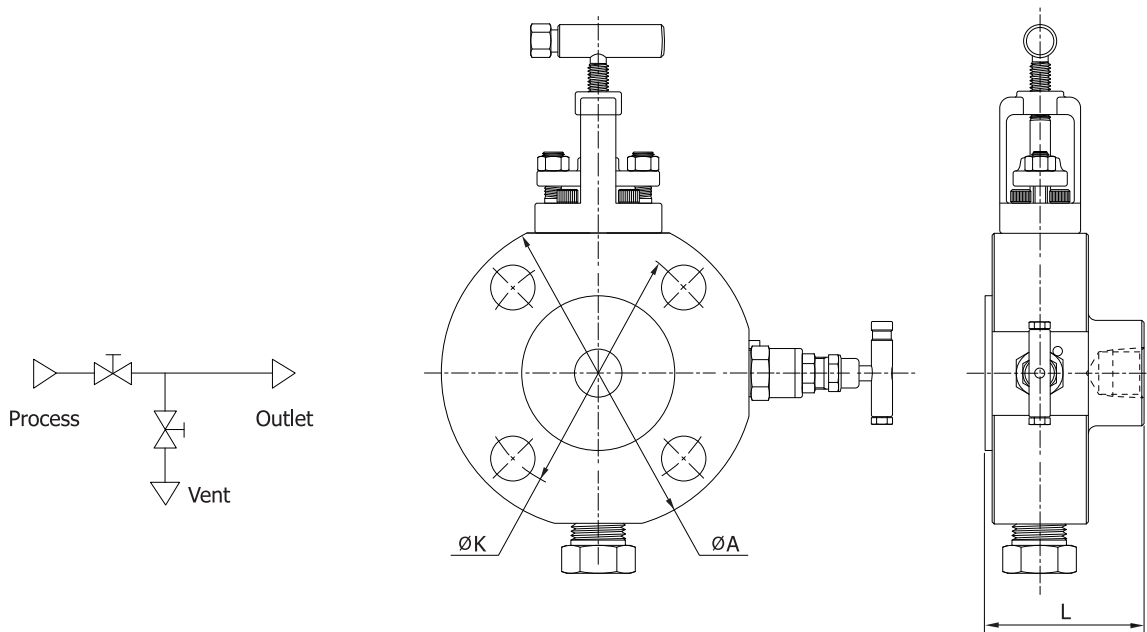
**VMS Series**



**Dimension & Weights**

Size (inch)	Class	Dimensions(mm)				Weight (kg)
		L(RF)	L(RTJ)	A	K	
1/2	150	64	-	99	60.3	2.0
	300	64	68	99	66.7	2.0
	600	68	68	99	66.7	2.0
	900/1500	68	68	133	82.5	3.4
	2500	68	68	133	88.9	3.4
3/4	150	64	-	99	69.8	2.0
	300	64	68	133	82.5	3.4
	600	68	68	133	82.5	3.4
	900/1500	68	68	133	88.9	3.4
	2500	73	73	159	95.2	5.5
1	150	64	68	133	79.4	2.4
	300	64	68	133	88.9	3.4
	600	68	68	133	88.9	3.4
	900/1500	73	73	159	101.6	5.5
	2500	73	73	159	108.0	5.5
1 1/2	150	64	68	127	98.4	3.2
	300	69	69	159	114.3	5.5
	600	73	73	159	114.3	5.5
	900/1500	73	73	178	128.8	7.8
	2500	82	84	235	146.1	11.4
2	150	69	73	159	120.6	5.5
	300	69	75	178	127.0	7.8
	600	73	75	178	127.0	7.8
	900/1500	82	84	235	165.1	11.4

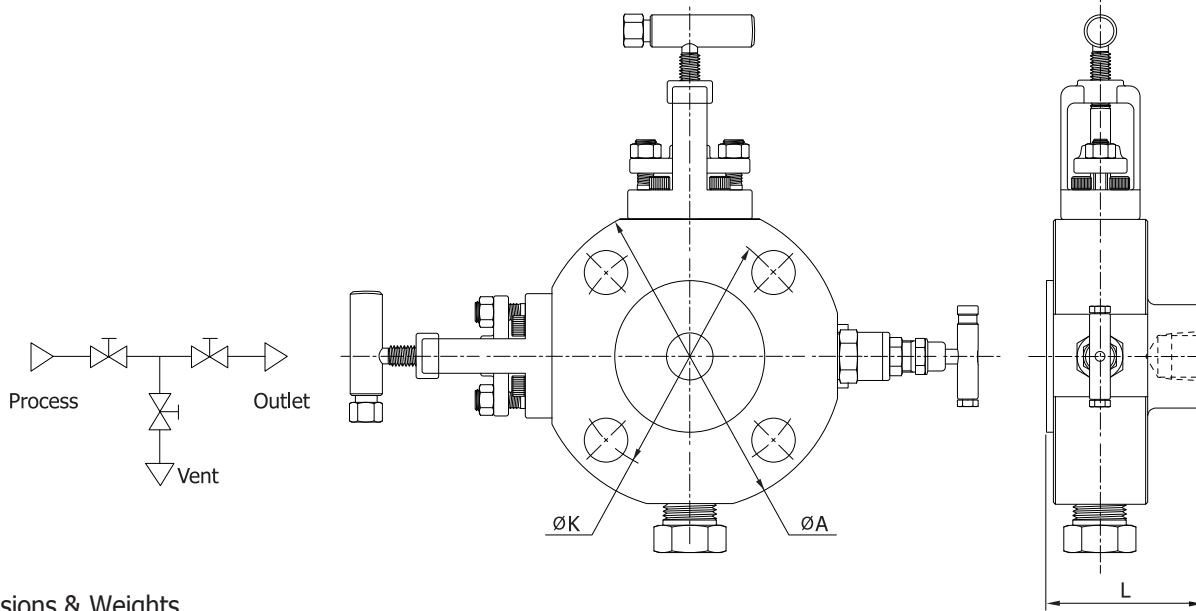
**VMB Series**



**Dimension & Weights**

Size (inch)	Class	Dimensions(mm)				Weight (kg)
		L(RF)	L(RTJ)	A	K	
1/2	150	64	-	99	60.3	2.0
	300	64	68	99	66.7	2.0
	600	68	68	99	66.7	2.0
	900/1500	68	68	133	82.5	3.4
	2500	68	68	133	88.9	3.4
3/4	150	64	-	99	69.8	2.0
	300	64	68	133	82.5	3.4
	600	68	68	133	82.5	3.4
	900/1500	68	68	133	88.9	3.4
	2500	73	73	159	95.2	5.5
1	150	64	68	133	79.4	2.4
	300	64	68	133	88.9	3.4
	600	68	68	133	88.9	3.4
	900/1500	73	73	159	101.6	5.5
	2500	73	73	159	108.0	5.5
1 1/2	150	64	68	127	98.4	3.2
	300	69	69	159	114.3	5.5
	600	73	73	159	114.3	5.5
	900/1500	73	73	178	128.8	7.8
	2500	82	84	235	146.1	11.4
2	150	69	73	159	120.6	5.5
	300	69	75	178	127.0	7.8
	600	73	75	178	127.0	7.8
	900/1500	82	84	235	165.1	11.4

**VMD Series**



**Dimensions & Weights**

Size inch	Class	Dimensions, mm				Weight kg
		L(RF)	L(RTJ)	A	K	
1/2	150	64	-	99	60.3	2.0
	300	64	68	99	66.7	2.0
	600	68	68	99	66.7	2.0
	900/1500	68	68	133	82.5	3.4
	2500	68	68	133	88.9	3.4
3/4	150	64	-	99	69.8	2.0
	300	64	68	133	82.5	3.4
	600	68	68	133	82.5	3.4
	900/1500	68	68	133	88.9	3.4
	2500	73	73	159	95.2	5.5
1	150	64	68	133	79.4	2.4
	300	64	68	133	88.9	3.4
	600	68	68	133	88.9	3.4
	900/1500	73	73	159	101.6	5.5
	2500	73	73	159	108.0	5.5
1 1/2	150	64	68	127	98.4	3.2
	300	69	69	159	114.3	5.5
	600	73	73	159	114.3	5.5
	900/1500	73	73	178	128.8	7.8
	2500	82	84	235	146.1	11.4
2	150	69	73	159	120.6	5.5
	300	69	75	178	127.0	7.8
	600	73	75	178	127.0	7.8
	900/1500	82	84	235	165.1	11.4

**Caution**

Valves that have not been actuated for a period of time may have a higher initial actuation torque. Packing adjustment may be required during the valve in service.

**Safe Valve Selection**

The selection of a valve for any application or system design must be considered to ensure safe performance. Valve function, valve rating, material compatibility, proper installation, operation and maintenance remain the sole responsibility of the system designer and the user. Dk Tech accepts no liability for any improper selection, installation, operation or maintenance.